

**Non-Cycling Refrigerated
Compressed Air Dryers**

G4

800-3000 SCFM

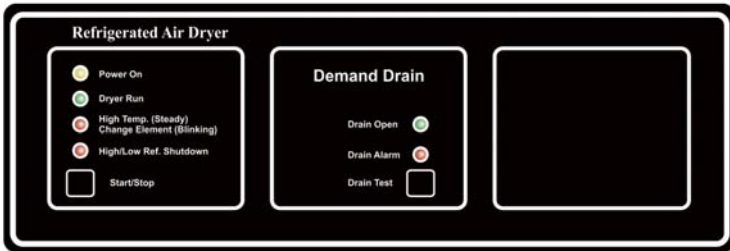


PSB INDUSTRIES INC.
General Air Division

G4 800-3000 SCFM

PSB's G4 Refrigerated Compressed Air Dryers combine maximum efficiency in a compact package. The simple design and proven reliability ensures prolonged operation with minimal maintenance.

Solid State Controls



G4 SPECIFICATIONS

Model	Cooling media	39°F PDP SCFM Capacity	Ref. H.P.	Electrical Connection V/Ph/Hz	Connection Air In/Out	Shipping Weight lbs.	Inches		
							L	W	H
G4-800	R134a	800	4	460/3/60	3" FLG	1620	74	41	61
G4-1000	R134a	1050	5	460/3/60	3" FLG	1800	74	41	61
G4-1200	R134a	1250	5	460/3/60	3" FLG	1850	74	41	61
G4-1500	R134a	1600	7 1/2	460/3/60	4" FLG	2365	78	48	62
G4-2000	R134a	2050	10	460/3/60	6" FLG	3150	102	54	67
G4-2500	R134a	2500	15	460/3/60	6" FLG	3370	102	54	67
G4-3000	R134a	3050	15	460/3/60	6" FLG	4015	108	66	77

Standard Ratings: Inlet pressure 100 psig
 Inlet air temperature 100 °F
 Ambient temperature 100 °F

CORRECTION FACTORS: Multiply (cf) by standard dryer capacities
 Example: At 90°F, 100 psig and 110°F ambient, model G4-2000 is rated for 2251 SCFM (2050 x 1.22 x 1.0 x 0.9)

INLET AIR TEMP.		INLET AIR PRESSURE		AMBIENT AIR TEMP.	
°F	(cf)	psig	(cf)	°F	(cf)
80	1.50	50	0.80		
90	1.22	75	0.90	90	1.05
100	1.00	100	1.00	100	1.00
110	0.83	125	1.02	110	0.90
120	0.69	150	1.05		

Refrigerant Condenser:

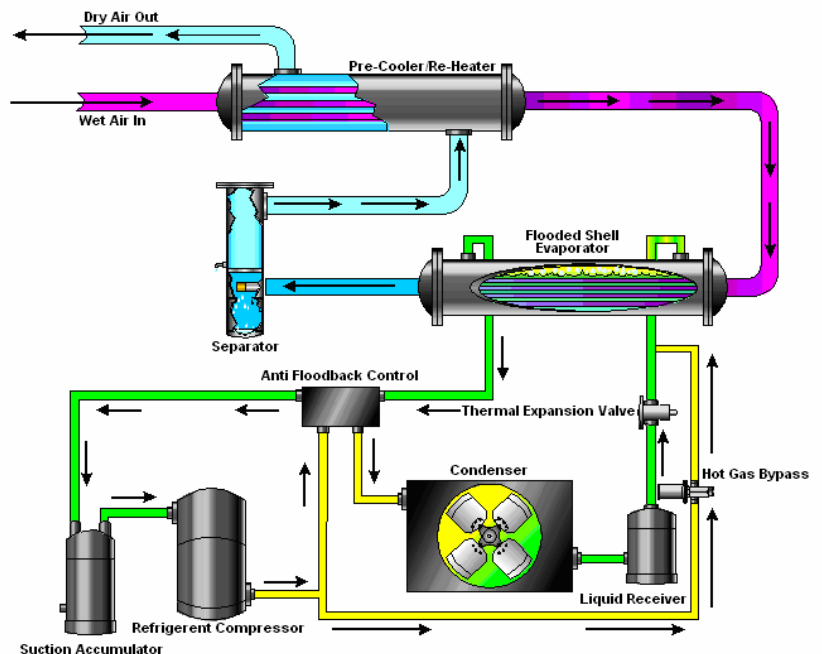
G4-800 through G4-1200: Air-cooled is standard
 N/C for Water-cooled

G4-1500 through G4-3000: Water-cooled is standard
 N/C for Air-cooled

G4 standard equipment:

- Power On Indicator Light
- Dryer Run Indicator Light
- Drain Open Indicator Light
- High Evaporator Indicator Light
- High/Low Refrigerant PSI Indicator Light
- Refrigerant Suction Gauge
- Refrigerant Discharge PSI
- Fully Active Evaporator
- Patented Anti-Floodback Control
- Optimum Capacity Bypass Control
- Low Ambient Fan Control (Air Cooled)
- High/Low Refrigeration Shutdown
- Refrigerant Expansion Valve
- High Efficiency Centrifugal Separator
- R-134A Refrigerant
- Demand Drain

Basic G4 800-3000 Diagram



PSB Industries Inc. • General Air Division
 1202 West 12th Street • Erie, PA. USA
 Phone: 814-453-3651 • Fax: 814-454-3492
www.PSBINDUSTRIES.com