

PSB INDUSTRIES

SPECIALIZING IN



STRUCTURAL FABRICATION

- . All Manufacturing Processes Completed In-House
- . Engineered to Customer Specification
- . 350,000 Square Foot Facility
- . Auto Cad / Rebis 3-D Design
- . AWS D1. 1 Certified



VESSELS and TANKS

- . PSB holds the U, UM, S, and R Code stamps of Authorization
- . Pressure Vessels are designed and fabricated per ASME Section VIII Div. 1 Requirements
- . Certified / Qualified Welders-ASME, Section IX



SPECIALIZED PAINTING

- . Pressurized / Airless Paint Systems
- . Urethane / Enamel Finishes
- . Two part Epoxies
- . Inorganic Zinc Primer

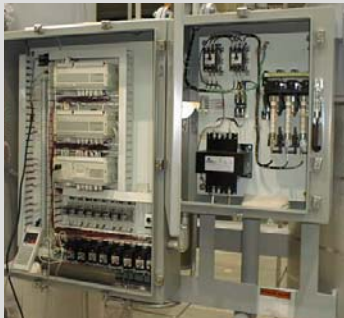
SAND BLASTING

- . Six Multimedia Blasting Booths
- . Glass Bead
- . Sand Blast



CONTROL PANEL ASSEMBLY & TESTING

- . UL, CSA
- . JIC Electrical
- . Design & Engineering to Customer specifications



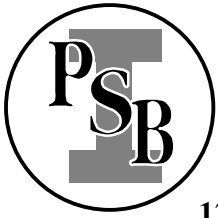
WAREHOUSING

- . Over 60,000 Square Feet of Warehouse Space
- . Overhead Cranes with 25 ton rating lift capabilities
- . 20 Functional bays
- . Outdoor Loading Docks

PACKAGING / SKID ASSEMBLIES

- . Pump Skids
- . Compressor / Blower Skids





PSB INDUSTRIES INC.
General Air Division
www.PSBINDUSTRIES.com

1202 West 12th Street, Erie, PA. USA 16501 P.O. Box 1318, Erie, PA. USA 16512-1318
Phone: (814) 453-3651 Fax: (814) 454-3492

Toll Free: 800-829-1119
E-mail: psb@genair.net

Whether across the street or around the globe, companies everywhere have come to rely on PSB's expertise in meeting their heavy industrial equipment design, manufacturing, assembly and packaging needs



Your Local PSB Representative is:



ISO CERTIFIED